



**Servend®**

# MD/MDH SERIES

MD 150/175/200/250 & MDH 302/402 Beverage/Ice Dispensers

## EXPLODED VIEW PARTS LIST



ISO 9001:2000  
Quality System Certified



### Manitowoc Beverage Equipment

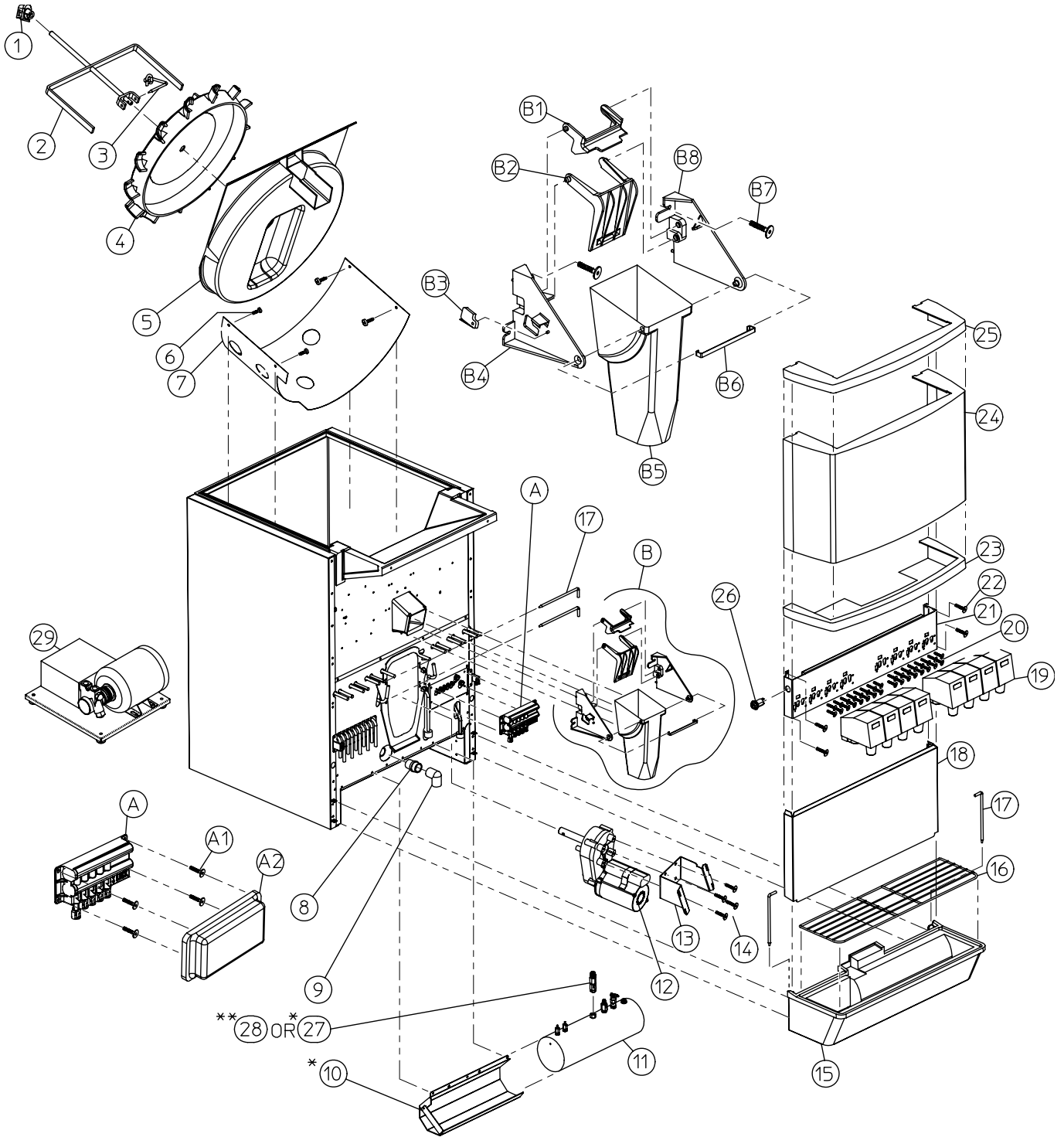
2100 Future Drive • Sellersburg, IN 47172-1868  
Tel: 812.246.7000, 800.367.4233 • Fax: 812.246.9922  
[www.manitowocbeverage.com](http://www.manitowocbeverage.com)

In accordance with our policy of continuous product development and improvement, this information is subject to change at any time without notice.



# EXPLODED VIEWS, PARTS & DIAGRAMS

## MD 150/175/200/250 EXPLODED VIEW



# EXPLODED VIEWS, PARTS & DIAGRAMS

## MD 150 PARTS LIST

INDEX NUMBER	PARTS DESCRIPTION	PART NUMBER	INDEX NUMBER	PARTS DESCRIPTION	PART NUMBER
1	MUSHROOM BUSHING	0101702	A	4 PORT MANIFOLD	5009782
2	U-BAR AGITATOR	5009529	A1	SCREW 8-32X1/4" SS PH TRUSS (4X)	0901018
3	U-BAR AGITATOR PIN	5010452	A2	MANIFOLD GASKET (COVER)	5009866
4	PADDLE WHEEL	2601415	B	WIDE ROCKING CHUTE ASSEMBLY	5008476
5	PADDLE WHEEL AREA	5001051	B1	DOOR LOCK	5002509
6	SCREW 8-32X1/2" KNURL UNSLT (4X)	5000711	B2	DOOR	5002508
7	BIN LINER	4220005	B3	MICROSWITCH	1000703
8	DRAIN FITTING 3/4"	1200121	B4	DOOR MOUNT LEFT	5002507
9	DRAIN ELBOW 3/4" FEMALE	1200117	B5	WIDE ROCKING CHUTE	5002506
*10	LOCATOR CARB TANK	5009599	B6	BRACKET	5003963
*11	HORIZONTAL CARBONATOR TANK	5010006	B7	SCREW 8-32X1/2" ZNC PH RD F (4X)	5000973
*11	FOR PROBE SEE 3.5X12.5 CARB TK DWG	5009611	B8	DOOR MOUNT RIGHT	5002657
12	MOTOR AY-62	5000868	--	LEVER (OPTIONAL)	5008351
13	MOTOR MOUNT	5001776	NOTE:	COLD CARBONATION UNITS REQUIRE PUMP DECK ASSEMBLY	
14	BOLT 1/4-20X5/8" SS HHCS (4X)	0900601	29	SEE PUMP DECK EXPLODED VIEW	5009902
15	DRAINPAN STD BLACK W/GRID	5010894			
16	GRID STD	5010684			
17	RETAINING PIN (2X)	4140023			
18	SPLASH PANEL STAINLESS STEEL	5007833			
19	VALVES	SEE BOM			
20	SCREW 10-32X1/4" RHMS (4 PER VLV)	0900925			
21	VALVE MOUNT CAP (6 VALVE)	5004284			
22	SCREW 8-32X1/2 ZNC PH RD F (4X)	5000973			
23	MERCHANDISER BOTTOM (BLACK)	NOT USED			
24	MERCHANDISER	5010892			
25	MERCHANDISER TOP (BLACK)	NOT USED			
26	KEY SWITCH	5000220			
*27	VALVE CHK DOUBLE 1/8" NPT X 0.116 CHUDNOW	5010380			
**28	FITTING 1/8" MALE NPT X 3/8" FLARE 0.116 CHUDNOW	5011069			

\* ITEMS 10, 11, & 27 ARE STANDARD OPTIONS FOR COLD CARBONATION  
\*\* ITEM 28 REPLACES ITEM 27 WHEN VENTED WATTS VALVE OPTION IS SELECTED.

## MD 175 PARTS LIST

INDEX NUMBER	PARTS DESCRIPTION	PART NUMBER	INDEX NUMBER	PARTS DESCRIPTION	PART NUMBER
1	MUSHROOM BUSHING	0101702	A	5 PORT MANIFOLD	5009780
2	U-BAR AGITATOR	5009529	A1	SCREW 8-32X1/4" SS PH TRUSS (4X)	0901018
3	U-BAR AGITATOR PIN	5010452	A2	MANIFOLD GASKET (COVER)	5009866
4	PADDLE WHEEL	2601415	B	NARROW ROCKING CHUTE ASSEMBLY	5006914
5	PADDLE WHEEL AREA	5001051	B1	DOOR LOCK	5002509
6	SCREW 8-32X1/2" KNURL UNSLT (4X)	5000711	B2	DOOR	5002508
7	BIN LINER	5009993	B3	MICROSWITCH	1000703
8	DRAIN FITTING 3/4"	1200121	B4	DOOR MOUNT LEFT	5002507
9	DRAIN ELBOW 3/4" FEMALE	1200117	B5	NARROW ROCKING CHUTE	5004850
*10	LOCATOR CARB TANK	5009599	B6	BRACKET	5003963
*11	HORIZONTAL CARBONATOR TANK ASSY	5010006	B7	SCREW 8-32X1/2" ZNC PH RD F (4X)	5000973
*11	FOR PROBE SEE 3.5X12.5 CARB TK DWG	5009611	B8	DOOR MOUNT RIGHT	5002657
12	MOTOR AY-62	5000868	--	LEVER (OPTIONAL)	5004851
13	MOTOR MOUNT	5001776	NOTE:	COLD CARBONATION UNITS REQUIRE PUMP DECK ASSEMBLY	
14	BOLT 1/4-20X5/8" SS HHCS (4X)	0900601	29	SEE PUMP DECK EXPLODED VIEW	5009902
15	DRAINPAN BLACK	5009542			
16	GRID	5009535			
17	RETAINING PIN (2X)	4140023			
18	SPLASH PANEL (SS)	5010262			
19	VALVES	SEE BOM			
20	SCREW 10-32X1/4" RHMS (4 PER VLV)	0900925			
21	VALVE MOUNT CAP (8 VLV)	5006837			
22	SCREW 8-32X1/2 ZNC PH RD F (4X)	5000973			
23	MERCHANDISER BOTTOM (BLACK)	5010174			
24	MERCHANDISER	5010283			
25	MERCHANDISER TOP (BLACK)	5010175			
26	KEY SWITCH	5000220			
*27	VALVE CHK DOUBLE 1/8" NPT X 0.116 CHUDNOW	5010380			
**28	FITTING 1/8" MALE NPT X 3/8" FLARE 0.116 CHUDNOW	5011069			

\* ITEMS 10, 11, & 27 ARE STANDARD OPTIONS FOR COLD CARBONATION  
\*\* ITEM 28 REPLACES ITEM 27 WHEN VENTED WATTS VALVE OPTION IS SELECTED.

# EXPLODED VIEWS, PARTS & DIAGRAMS

## MD 200/250 PARTS LIST

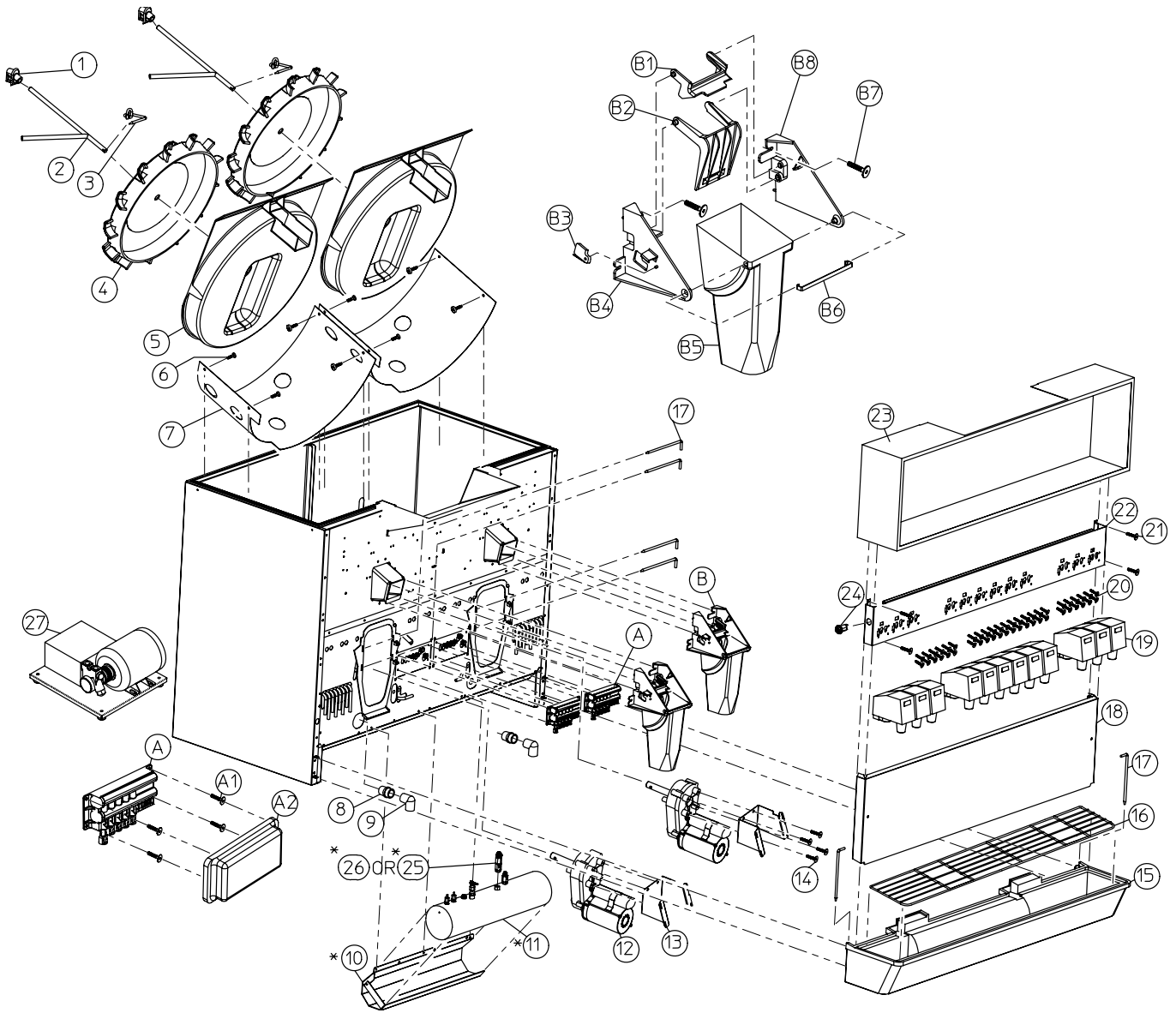
INDEX NUMBER	PARTS DESCRIPTION	PART NUMBER	INDEX NUMBER	PARTS DESCRIPTION	PART NUMBER
1	MUSHROOM BUSHING	0101702	A	5 PORT MANIFOLD	5009780
2	U-BAR AGITATOR	5009529	A1	SCREW 8-32X1/4" SS PH TRUSS (4X)	0901018
3	U-BAR AGITATOR PIN	5010452	A2	MANIFOLD GASKET (COVER)	5009866
4	PADDLE WHEEL	2601415	B	WIDE ROCKING CHUTE ASSEMBLY	5008476
5	PADDLE WHEEL AREA	5001052	B1	DOOR LOCK	5002509
6	SCREW 8-32X1/2" KNURL UNSLT (4X)	5000711	B2	DOOR	5002508
7	BIN LINER	7050055	B3	MICROSWITCH	1000703
8	DRAIN FITTING 3/4"	1200121	B4	DOOR MOUNT LEFT	5002507
9	DRAIN ELBOW 3/4" FEMALE	1200117	B5	WIDE ROCKING CHUTE	5002506
*10	LOCATOR CARB TANK	5009599	B6	BRACKET	5003963
*11	HORIZONTAL CARBONATOR TANK ASSY	5010006	B7	SCREW 8-32X1/2" ZNC PH RD F (4X)	5000973
*11	FOR PROBE SEE 3.5X12.5 CARB TK DWG	5009611	B8	DOOR MOUNT RIGHT	5002657
12	MOTOR AY-62	5000868	--	LEVER (OPTIONAL)	5008351
13	MOTOR MOUNT	5001776			
14	BOLT 1/4-20X5/8" SS HHCS (4X)	0900601			
15	DRAINPAN STD BLACK W/GRID	5010660	NOTE:	COLD CARBONATION UNITS	
15	DRAINPAN GALVN BLACK W/GRID	5010584		REQUIRE PUMP DECK ASSEMBLY	
15	DRAINPAN GALVN BLACK W/O GRID	5010583	29	SEE PUMP DECK EXPLODED VIEW	5009902
16	GRID STD	5010017			
16	GRID ACCUFILL	5010218			
17	RETAINING PIN (2X)	4140023			
18	SPLASH PANEL STAINLESS STEEL	5007823			
18	SPLASH PANEL GALVN BLACK	5010662			
19	VALVES	SEE BOM			
20	SCREW 10-32X1/4" RHMS (4 PER VLV)	0900925			
21	VALVE MOUNT CAP (8 VALVE)	5003834			
21	VALVE MOUNT CAP (10 VALVE)	5007289			
22	SCREW 8-32X1/2 ZNC PH RD F (4X)	5000973			
23	MERCHANDISER BOTTOM (BLACK)	NOT USED			
24	MERCHANDISER	5010272			
25	MERCHANDISER TOP (BLACK)	NOT USED			
26	KEY SWITCH	5000220			
*27	VALVE CHK DOUBLE 1/8" NPT X 0.116 CHUDNOW	5010380			
**28	FITTING 1/8" MALE NPT X 3/8" FLARE 0.116 CHUDNOW	5011069			

\* ITEMS 10, 11, & 27 ARE STANDARD OPTIONS FOR COLD CARBONATION

\*\* ITEM 28 REPLACES ITEM 27 WHEN VENTED WATTS VALVE OPTION IS SELECTED.

# EXPLODED VIEWS, PARTS & DIAGRAMS

## MDH 302/402 EXPLODED VIEW



# EXPLODED VIEWS, PARTS & DIAGRAMS

## MDH 302 PARTS LIST

INDEX NUMBER	PARTS DESCRIPTION	PART NUMBER	INDEX NUMBER	PARTS DESCRIPTION	PART NUMBER
1	MUSHROOM BUSHING (2X)	0101702	22	VALVE MOUNT CAP (12 VLV)	5006967
2	U-BAR AGITATOR (2X)	5009529	22	VALVE MOUNT CAP DUAL FLAVOR (12 VLV)	5028719
3	U-BAR AGITATOR PIN (2X)	5010452	23	MERCHANDISER	5003651
4	PADDLE WHEEL (2X)	2601415	23	BLACK EXTENDED MERCH IS AVAILBLE	
5	PADDLE WHEEL AREA (2X)	5001051	24	KEY SWITCH	5000220
6	SCREW 8-32X1/2" KNURL UNSLT (4X PER)	5000711	*25	VALVE CHK DOUBLE 1/8" NPT X 0.116 CHUDNOW	5010380
7	BIN LINER (LEFT)	4220005	**26	FITTING 1/8" MALE NPT X 3/8" FLARE 0.116 CHUDNOW	5011069
7	BIN LINER (RIGHT)	5010624	A	4 PORT MANIFOLD	5009782
8	DRAIN FITTING 3/4" (2X)	1200121	A1	SCREW 8-32X1/4" SS PH TRUSS (4X)	0901018
9	DRAIN ELBOW 3/4" FEMALE (2X)	1200117	A2	MANIFOLD GASKET (COVER)	5009866
*10	LOCATOR CARB TANK	5010000	B	WIDE ROCKING CHUTE ASSEMBLY	5003622
*11	HORIZONTAL CARBONATOR TANK ASSY	5010121	B1	DOOR LOCK	5002509
*11	FOR PROBES SEE 3.5X17 CARB TK DWG	5009612	B2	DOOR	5002508
12	MOTOR AY-62 (2X)	5000868	B3	MICROSWITCH	1000703
13	MOTOR MOUNT (2X)	5001776	B4	DOOR MOUNT LEFT	5002507
14	BOLT 1/4-20X5/8" SS HHCS (4X PER)	0900601	B5	WIDE ROCKING CHUTE	5002506
15	DRAINPAN BLACK (SS WRAP)	5010111	B6	BRACKET	5003963
15	DRAINPAN BLACK (BLACK GALVN WRAP)	5009352	B7	SCREW 8-32X1/2" ZNC PH RD F (4X)	5000973
15	DRAINPAN BLACK (BLOWMOLDED)	5010639	B8	DOOR MOUNT RIGHT	5002657
16	GRID	5010016	--	LEVER (OPTIONAL)	5002510
17	RETAINING PIN (2X PER)	4140023	NOTE:	COLD CARBONATION UNITS	
18	SPLASH PANEL (SS)	5006555		REQUIRE PUMP DECK ASSEMBLY	
18	SPLASH PANEL (BLACK GALVN)	5007727	27	SEE PUMP DECK EXPLODED VIEW	5009902
18	SPLASH PANEL BLACK	5007688			
19	VALVES	SEE BOM			
20	SCREW 10-32X1/4" RHMS (4X PER VLV)	0900925			
21	SCREW 8-32X1/2 ZNC PH RD F (4X)	5000973			

\* ITEMS 10, 11, & 25 ARE STANDARD OPTIONS FOR COLD CARBONATION  
 \*\* ITEM 26 REPLACES ITEM 25 WHEN VENTED WATTS VALVE OPTION IS SELECTED.

## MDH 402 PARTS LIST

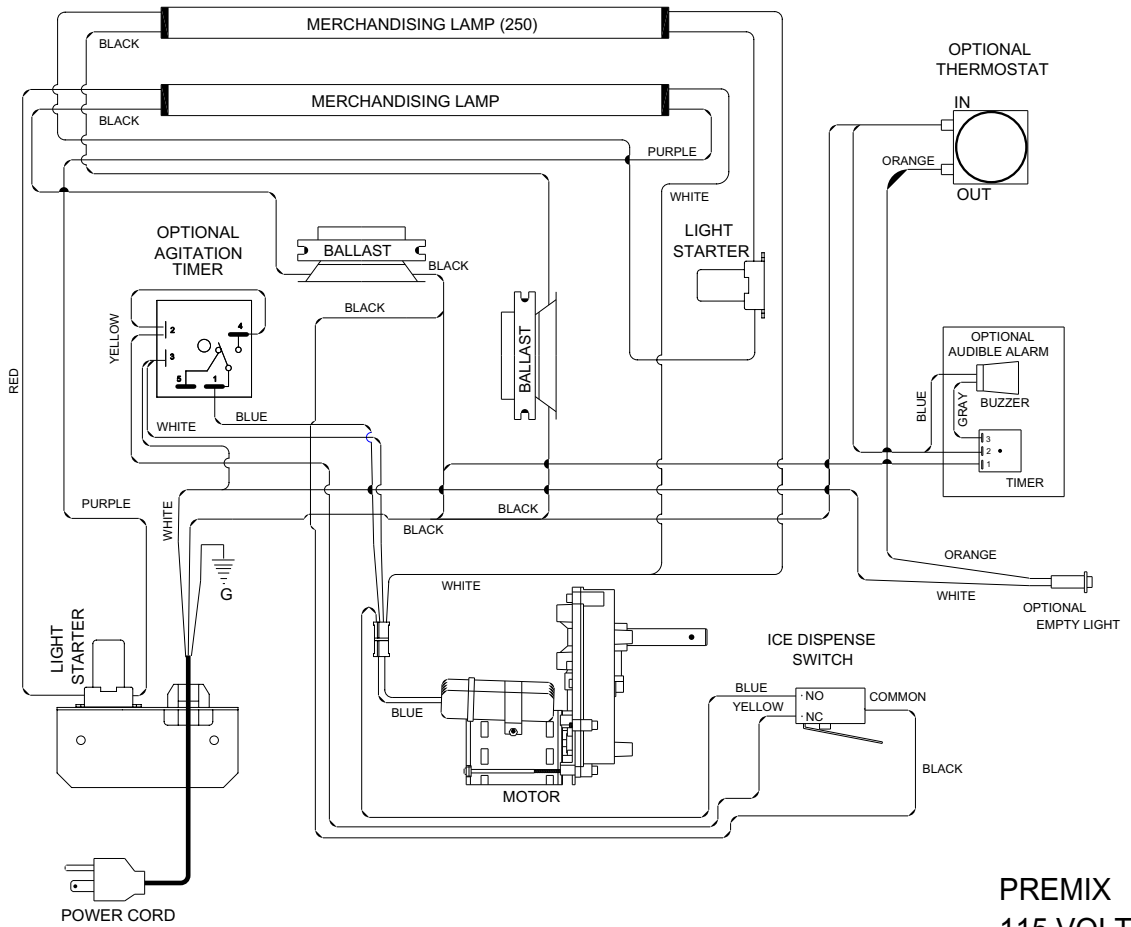
INDEX NUMBER	PARTS DESCRIPTION	PART NUMBER	INDEX NUMBER	PARTS DESCRIPTION	PART NUMBER
1	MUSHROOM BUSHING (2X)	0101702	22	VALVE MOUNT CAP (20 VLV)	5010783
2	U-BAR AGITATOR (2X)	5009529	23	MERCHANDISER	5009742
3	U-BAR AGITATOR PIN (2X)	5010452	24	KEY SWITCH	5000220
4	PADDLE WHEEL (2X)	2601415	*25	** NOT USED **	5010380
5	PADDLE WHEEL AREA (2X)	5001051	**26	** NOT USED **	5011069
6	SCREW 8-32X1/2" KNURL UNSLT (4X PER)	5000711	A	5 PORT MANIFOLD	5009780
7	BIN LINER (LEFT)	5009208	A1	SCREW 8-32X1/4" SS PH TRUSS (4X)	0901018
7	BIN LINER (RIGHT)	5009209	A2	MANIFOLD GASKET (COVER)	5009866
8	DRAIN FITTING 3/4" (2X)	1200121	B	NARROW ROCKING CHUTE ASSEMBLY	5006914
9	DRAIN ELBOW 3/4" FEMALE (2X)	1200117	B1	DOOR LOCK	5002509
10	** NOT USED **	N/A	B2	DOOR	5002508
11	** NOT USED **	N/A	B3	MICROSWITCH	1000703
12	MOTOR AY-62 (2X)	5000868	B4	DOOR MOUNT LEFT	5002507
13	MOTOR MOUNT (2X)	5001776	B5	NARROW ROCKING CHUTE	5004850
14	BOLT 1/4-20X5/8" SS HHCS (4X PER)	0900601	B6	BRACKET	5003963
15	DRAINPAN BLACK (BLOWMOLDED)	5009751	B7	SCREW 8-32X1/2" ZNC PH RD F (4X)	5000973
16	GRID	5009290	B8	DOOR MOUNT RIGHT	5002657
17	RETAINING PIN (2X PER)	4140023	--	LEVER (OPTIONAL)	5004851
18	SPLASH PANEL (SS)	5009760	NOTE:	MDH-402 USES RETRO FIT KIT	
18	SPLASH PANEL (BLACK GALVN)	5009210		FOR INTERNAL CARBONATION	
19	VALVES	SEE BOM	--	115 VOLT RETRO FIT KIT	5010685
20	SCREW 10-32X1/4" RHMS (4X PER VLV)	0900925	--	220 VOLT RETRO FIT KIT	5010729
21	SCREW 8-32X1/2 ZNC PH RD F (4X)	5000973			
22	VALVE MOUNT CAP (16 VLV)	5010782			

# EXPLODED VIEWS, PARTS & DIAGRAMS

## MD 150 115V PRE-MIX WIRING DIAGRAM

### CAUTION

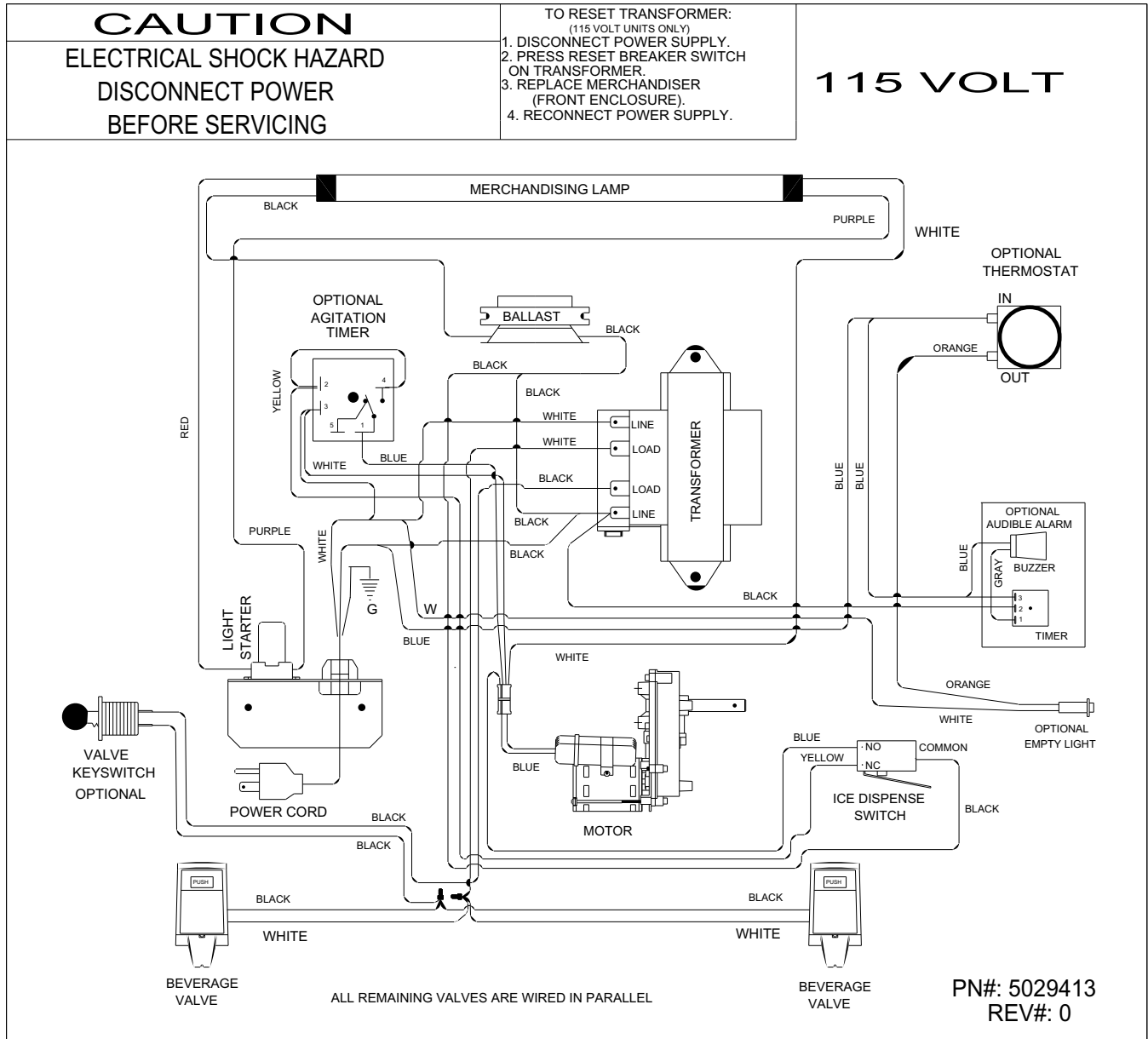
ELECTRICAL SHOCK HAZARD  
DISCONNECT POWER  
BEFORE SERVICING



PREMIX  
115 VOLT  
5029411-0

# EXPLODED VIEWS, PARTS & DIAGRAMS

## MD 150/175/200 115V WIRING DIAGRAM



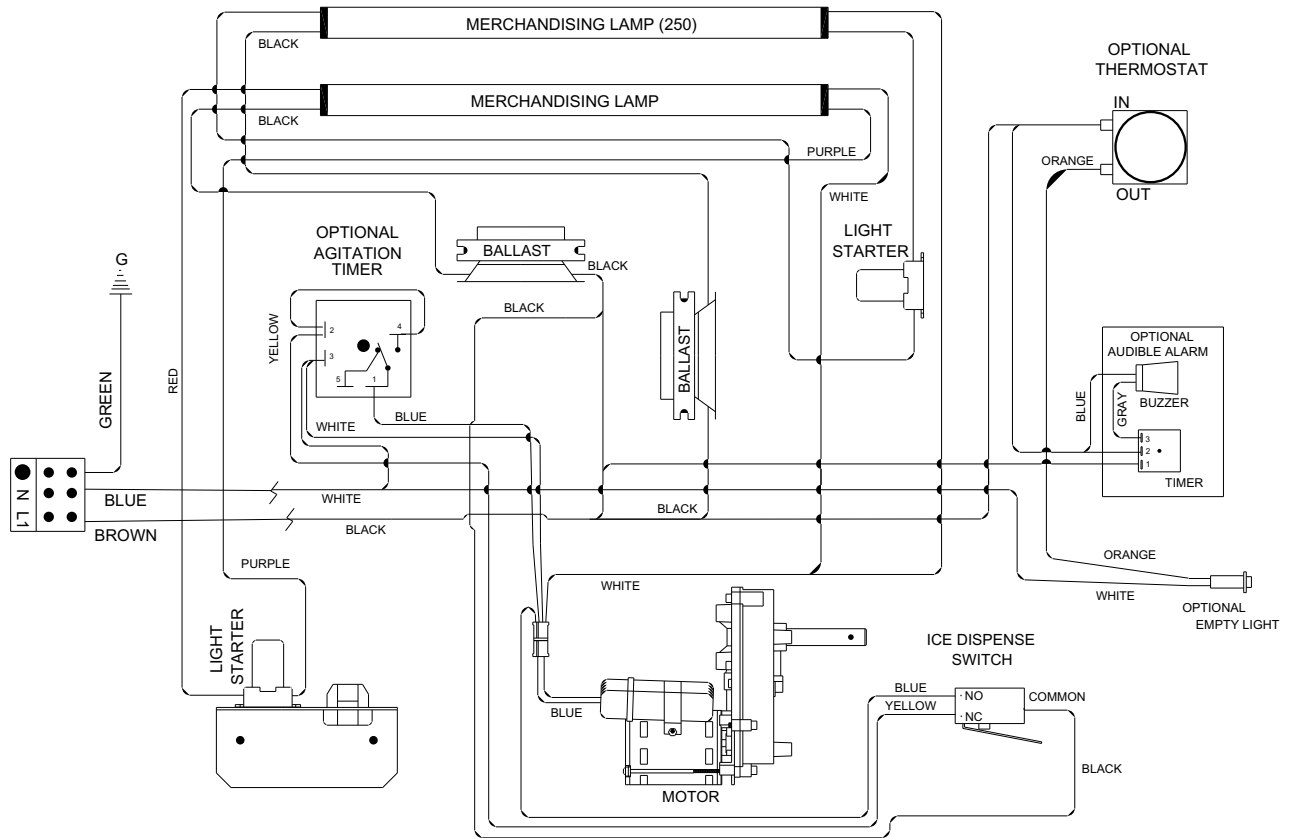


# EXPLODED VIEWS, PARTS & DIAGRAMS

## MD 150 220V PRE-MIX WIRING DIAGRAM

### CAUTION

ELECTRICAL SHOCK HAZARD  
DISCONNECT POWER  
BEFORE SERVICING



220/240 VOLT  
5029427-0

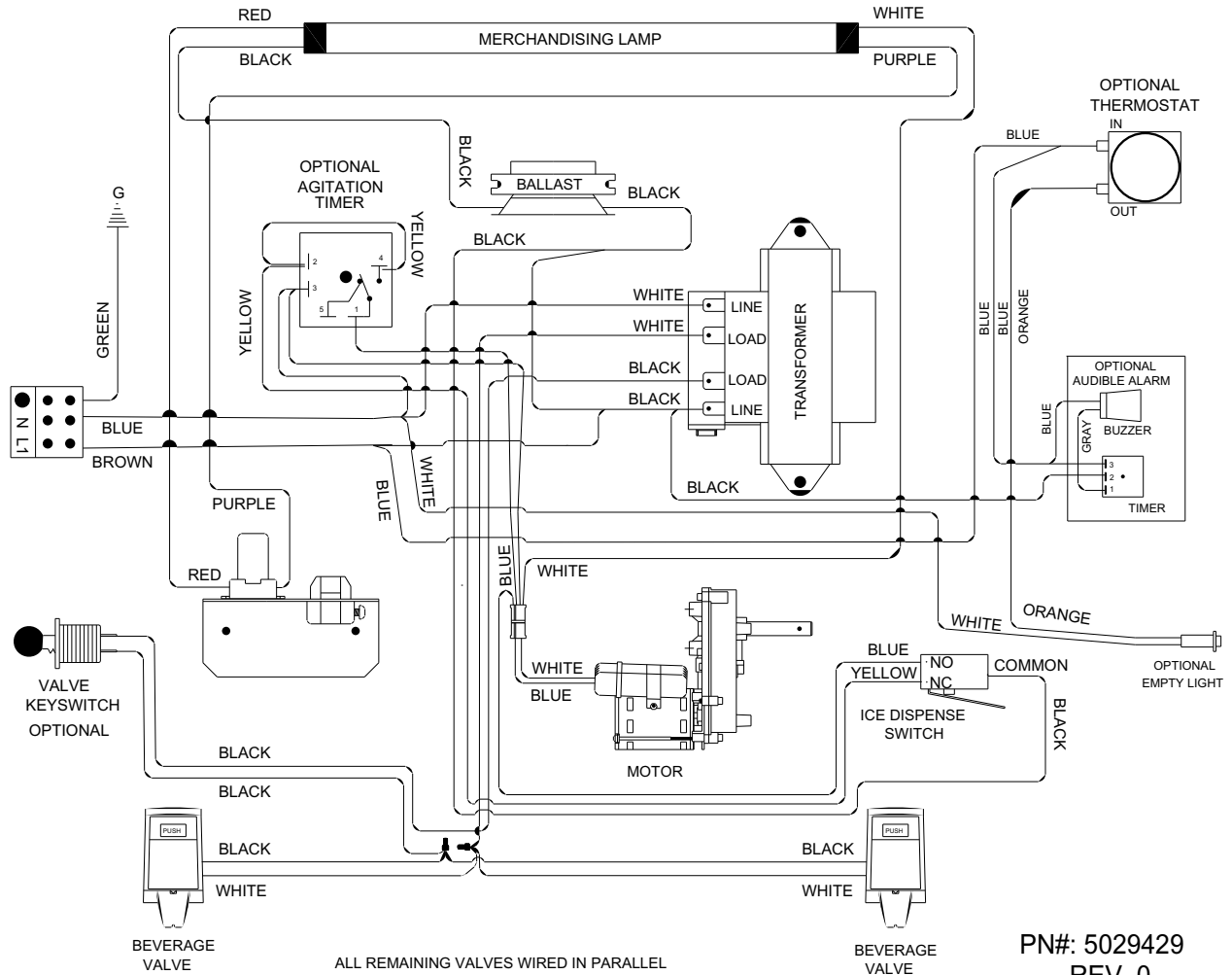
# EXPLODED VIEWS, PARTS & DIAGRAMS

## MD 150/175/200 220V WIRING DIAGRAM

**CAUTION**

ELECTRICAL SHOCK HAZARD  
DISCONNECT POWER  
BEFORE SERVICING

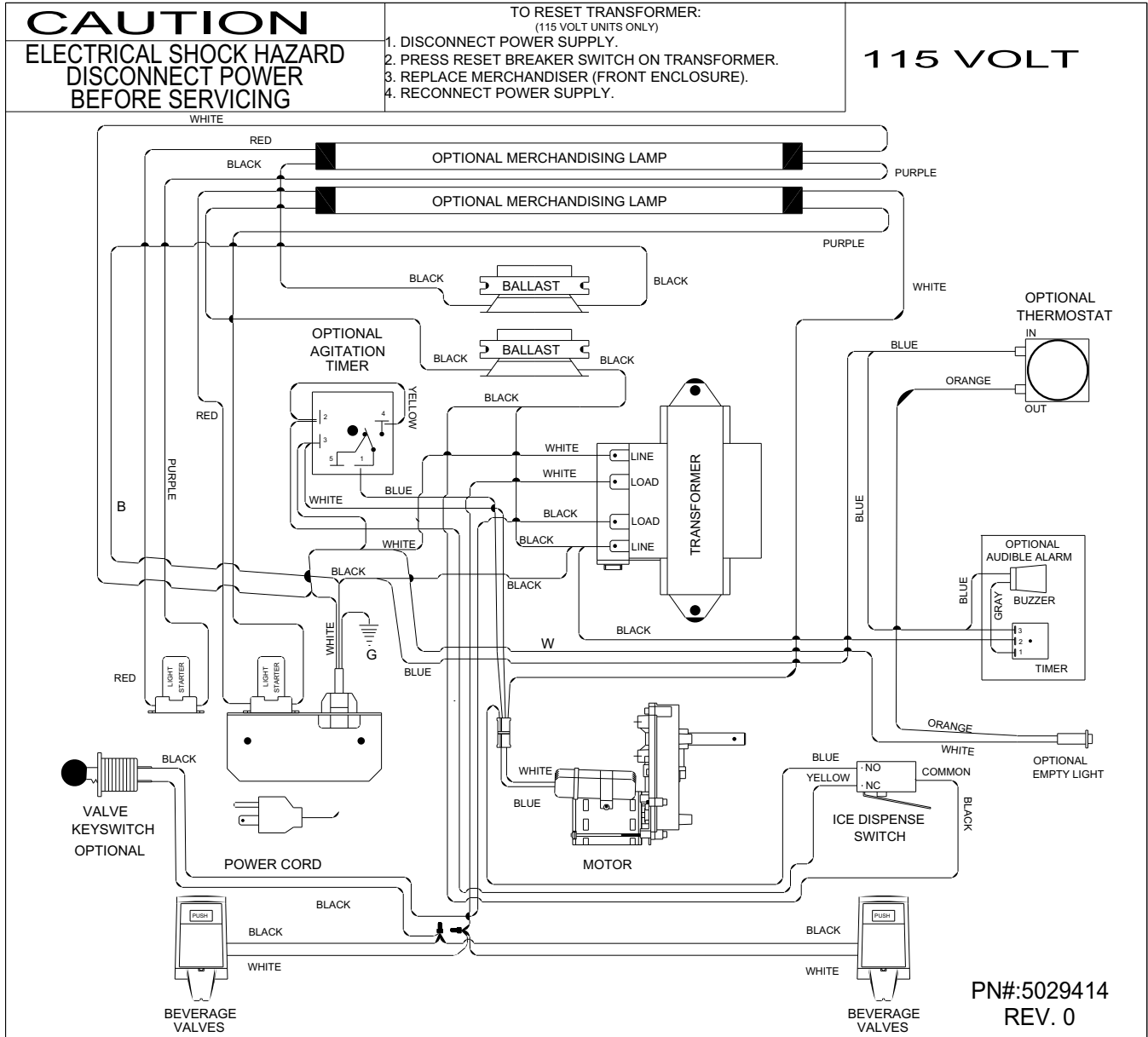
**220/240 VOLT**



PN#: 5029429  
REV. 0

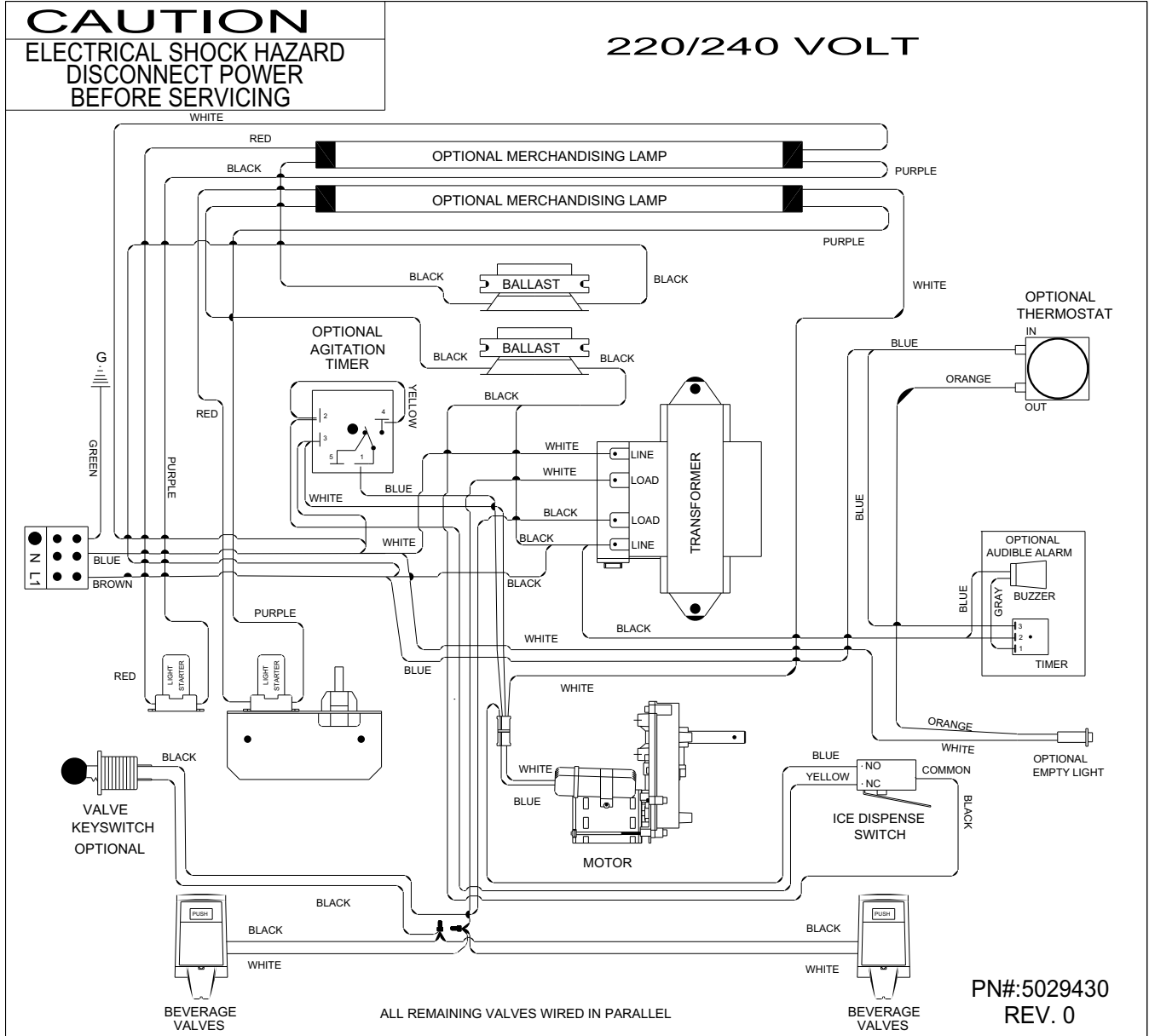
# EXPLODED VIEWS, PARTS & DIAGRAMS

## MD 250 115V WIRING DIAGRAM



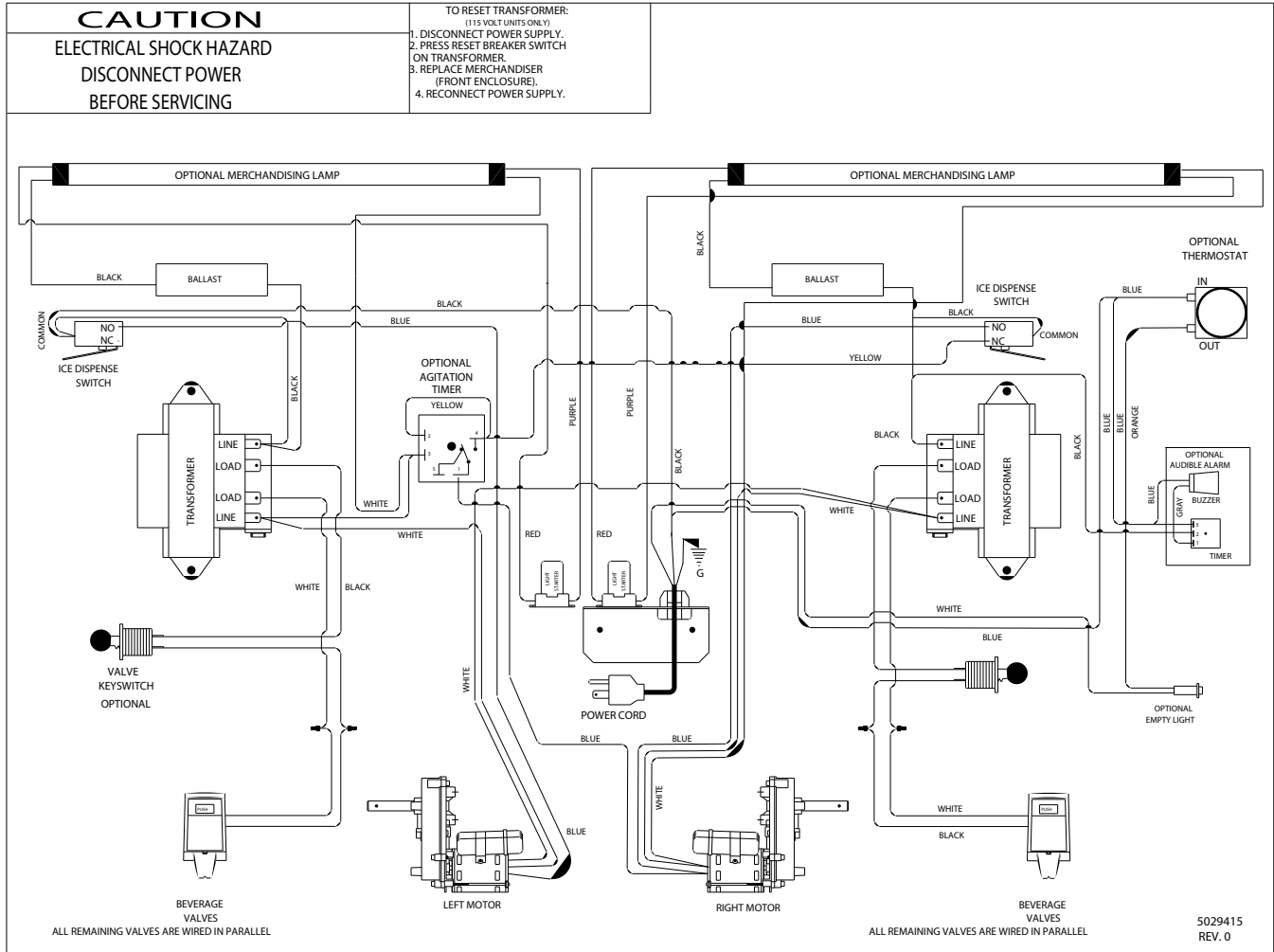
# EXPLODED VIEWS, PARTS & DIAGRAMS

## MD 250 220V WIRING DIAGRAM



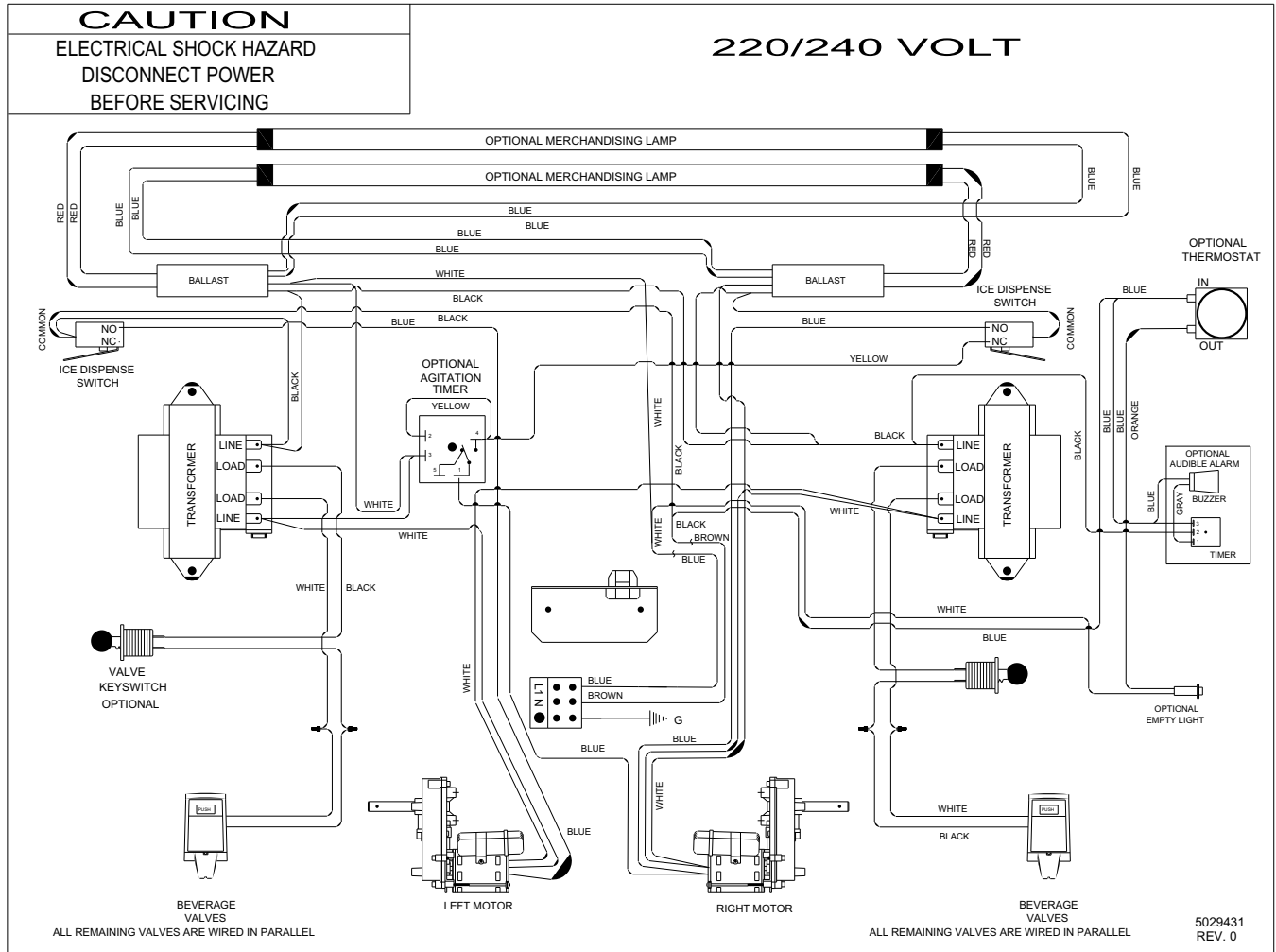
# EXPLODED VIEWS, PARTS & DIAGRAMS

## MDH 302 115V WIRING DIAGRAM



# EXPLODED VIEWS, PARTS & DIAGRAMS

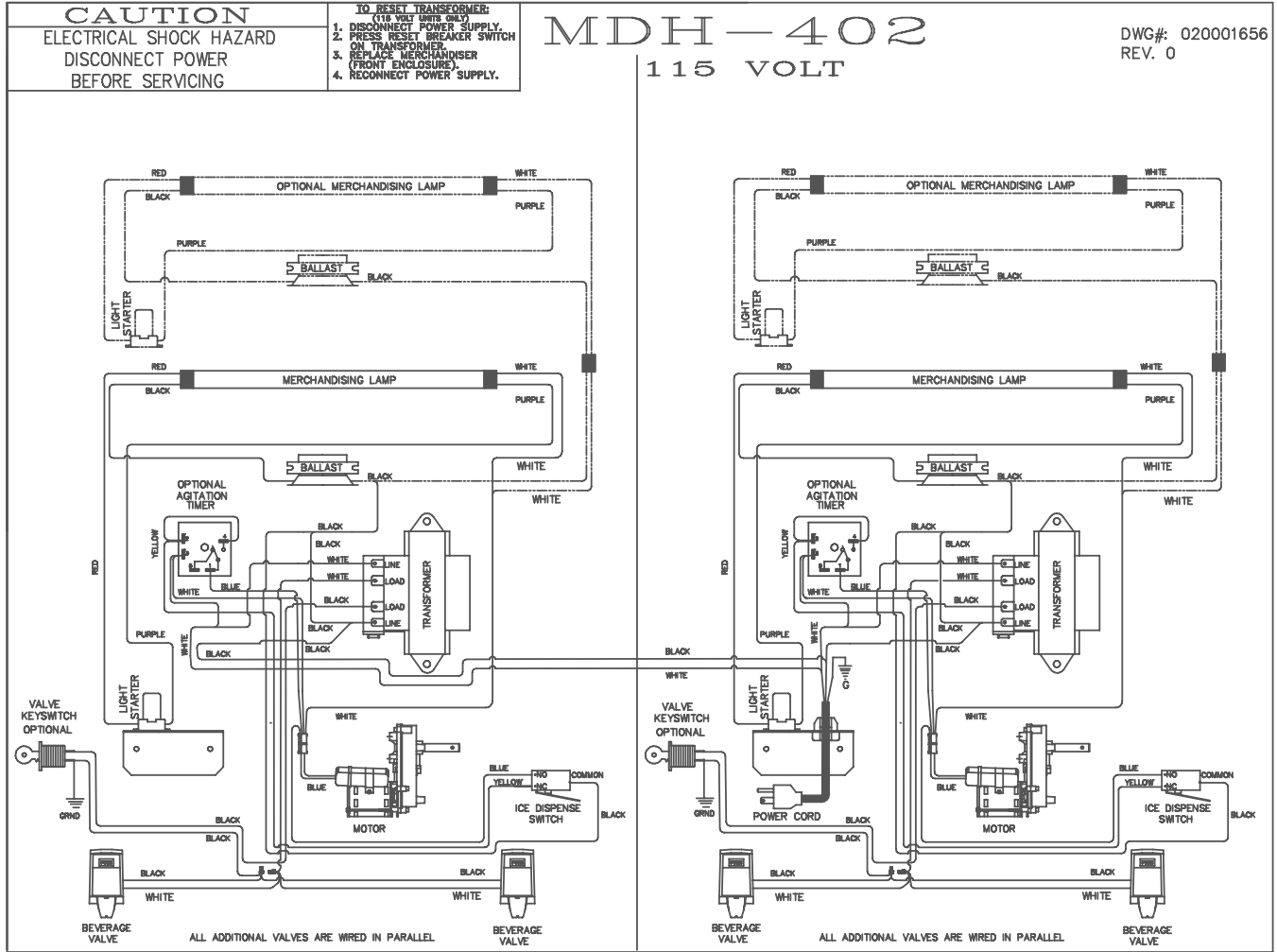
## MDH 302 220V WIRING HARNESS



5029431  
REV. 0

# EXPLODED VIEWS, PARTS & DIAGRAMS

## MDH 402 115V WIRING DIAGRAM



# EXPLODED VIEWS, PARTS & DIAGRAMS

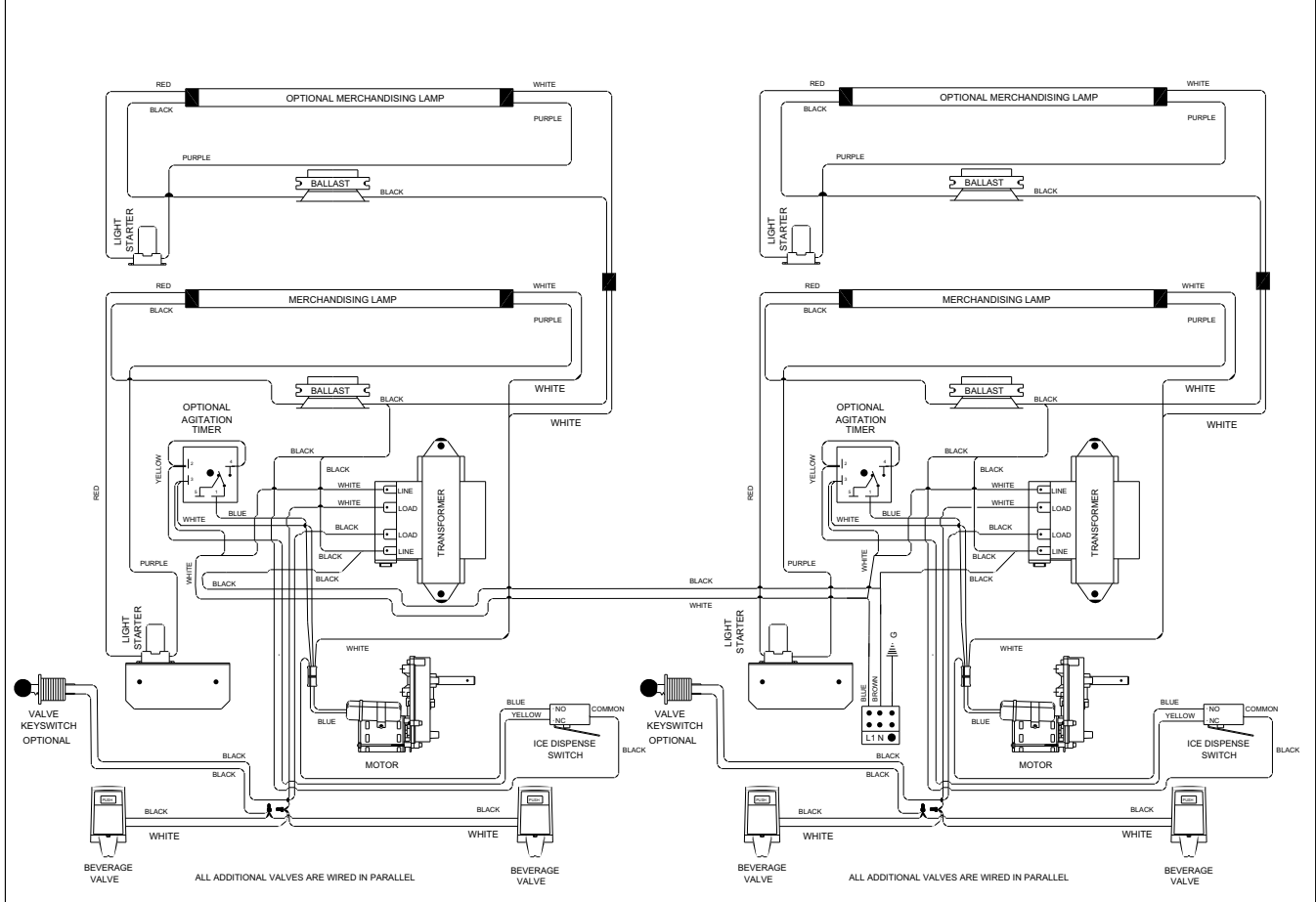
## MDH 402 220V WIRING DIAGRAM

**CAUTION**  
ELECTRICAL SHOCK HAZARD  
DISCONNECT POWER  
BEFORE SERVICING

TO RESET TRANSFORMER:  
(115 VOLT UNITS ONLY)  
1. DISCONNECT POWER SUPPLY.  
2. PRESS RESET BREAKER SWITCH  
ON TRANSFORMER.  
3. REPLACE MERCHANDISER  
(FRONT ENCLOSURE).  
4. RECONNECT POWER SUPPLY.

**MDH-402**  
220/240 VOLT

DWG#: 5029432  
REV. 0







**Servend®**



*ISO 9001:2000  
Quality System Certified*



### **Manitowoc Beverage Equipment**

2100 Future Drive • Sellersburg, IN 47172-1868  
Tel: 812.246.7000, 800.367.4233 • Fax: 812.246.9922  
[www.manitowocbeverage.com](http://www.manitowocbeverage.com)

In accordance with our policy of continuous product development and improvement, this information is subject to change at any time without notice.







