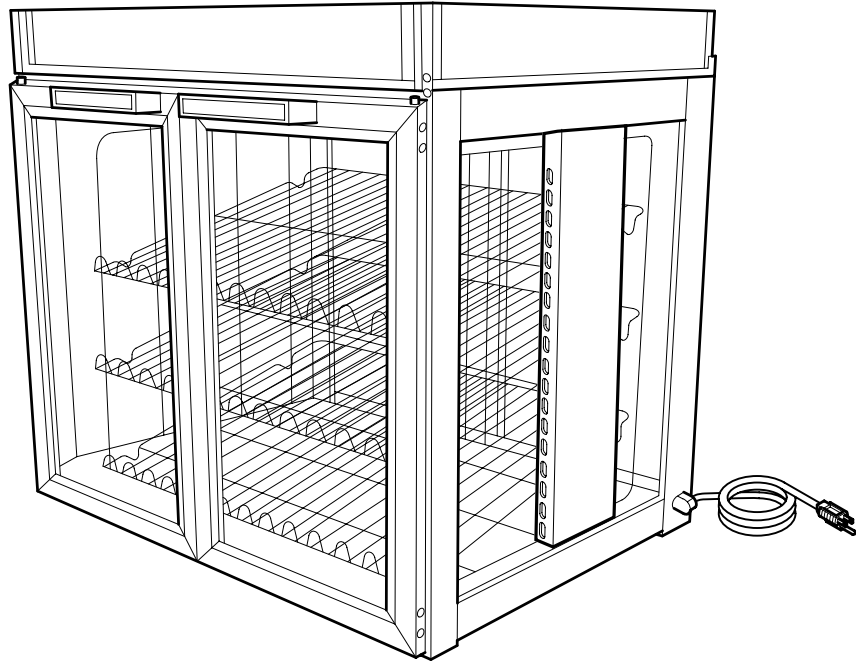




INSTALLATION & OPERATION MANUAL & REPLACEMENT PARTS LIST



HEATED HOLDING CABINET Model No. AFST-2X

INSTALLATION & OPERATION PROCEDURES

Model AFST-2X

⚠ Installation, maintenance and repair to be performed by qualified service personnel only.

SAFETY PRECAUTIONS

- ⚠ To avoid any injury, turn the power switch off, unplug the unit from the power source and allow to cool before performing any maintenance.**
- ⚠ Some exterior surfaces on the unit will get hot. Use caution when touching these areas to avoid injury.**
- ⚠ The unit must be transported in an upright position. If laid on its side, all glass surfaces must be secured with tape.**
- ⚠ For safe and proper operation, the unit must be located a reasonable distance from combustible walls and materials. If safe distances are not maintained, discoloration or combustion could occur.**
- ⚠ Locate the unit at the proper counter height, in an area that is convenient for use. The location should be level to prevent the cabinet or its contents from accidentally falling, and strong enough to support the weight of the unit and food displayed.**
- ⚠ Plug the unit into a grounded electrical outlet of the correct voltage, size and plug configuration. If the plug and receptacle do not match, contact a qualified electrician to determine the proper voltage and size, and install the proper electrical outlet.**
- ⚠ Abrasive cleaners could scratch the finish of your unit.**
- ⚠ Only bulbs which meet or exceed N.S.F. standards, specifically designed for food holding areas must be used. Breakage of bulbs not specially coated could result in personal injury and/or food contamination.**

ELECTRICAL SPECIFICATIONS

Voltage	Wattage	Amps	Plug Configuration	Shipping Weight
120/208	1835	11.7	NEMA L14-20P	160 lbs.
120/240	1835	11.7	NEMA L14-20P	(73 kg)

⚠ CAUTION

Before installing plug into electrical receptacle, measure voltage at the receptacle from “neutral” to each “hot leg.” Voltage at these connections must not exceed 125 Volts.

DIMENSIONS

Overall Dimensions

32-7/8"W x 27"D x 30"H (83 x 69 x 76 cm)

Rack Dimensions

27"W x 19-3/4"D x 21-1/4"H (69 x 50 x 54 cm)

INSTALLATION

1. Remove unit from box.
2. Remove tape, packing materials and protective film from all surfaces of unit.

3. Install door handles to top of doors using the screws provided.
4. Install the display signs and acrylic panels into the brackets at the top of the cabinet sides.

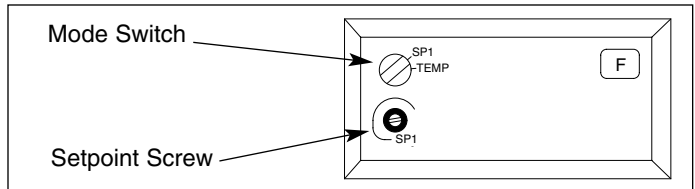
OPERATION

1. Plug unit into an electrical outlet of the correct voltage, size and plug configuration. See *Electrical Specifications* for details.

⚠ CAUTION

Before installing plug into electrical receptacle, measure voltage at the receptacle from “neutral” to each “hot leg.” Voltage at these connections must not exceed 125 volts.

2. Turn the Power Switch on the control panel to the ON position.
3. To set temperature, turn the red Mode Switch counterclockwise to the SP-1 position indicated on the controller.
4. Adjust the Setpoint Screw to the desired temperature and turn the red Mode Switch to the TEMP position. The surface temperature range is room temperature to 220°F. (104°C).
5. Allow 15-20 minutes for unit to reach operating temperature.



Control Panel

MAINTENANCE

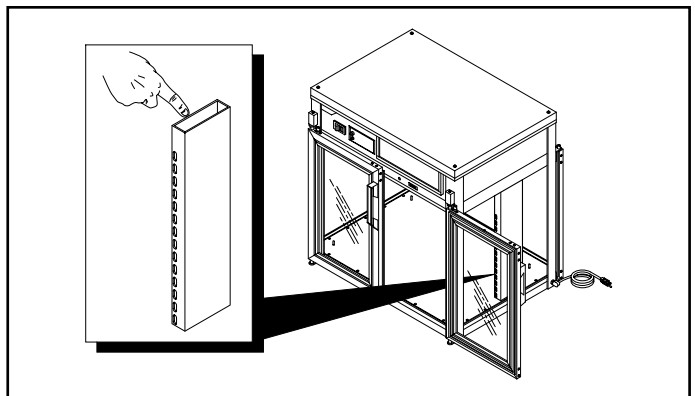
Your Holding & Display Cabinet is designed for maximum durability and performance, with minimum maintenance.

⚠ WARNING

To avoid any injury, turn the power switch off, unplug the unit from the power source and allow to cool before performing any maintenance.

⚠ CAUTION

Air diffuser tube **MUST** be installed with open end facing up. If installed incorrectly, damage to the unit will occur and the unit will not function properly.



Air Diffuser Installation

CLEANING

To preserve the bright finish of the cabinet, it is recommended that the exterior and interior surfaces be wiped daily with a damp cloth. Stubborn stains may be removed with a good stainless steel cleaner or a non-abrasive cleaner. Hard to reach areas should be cleaned with a small brush and mild soap.



CAUTION

Abrasive cleaners could scratch the finish of the cabinet.

Clean the glass sides using a common glass cleaner.

LIGHT BULB REPLACEMENT

The display lights are shatter-resistant incandescent light bulbs which illuminate the warming area. These bulbs have a special coating to guard against injury and food contamination in the

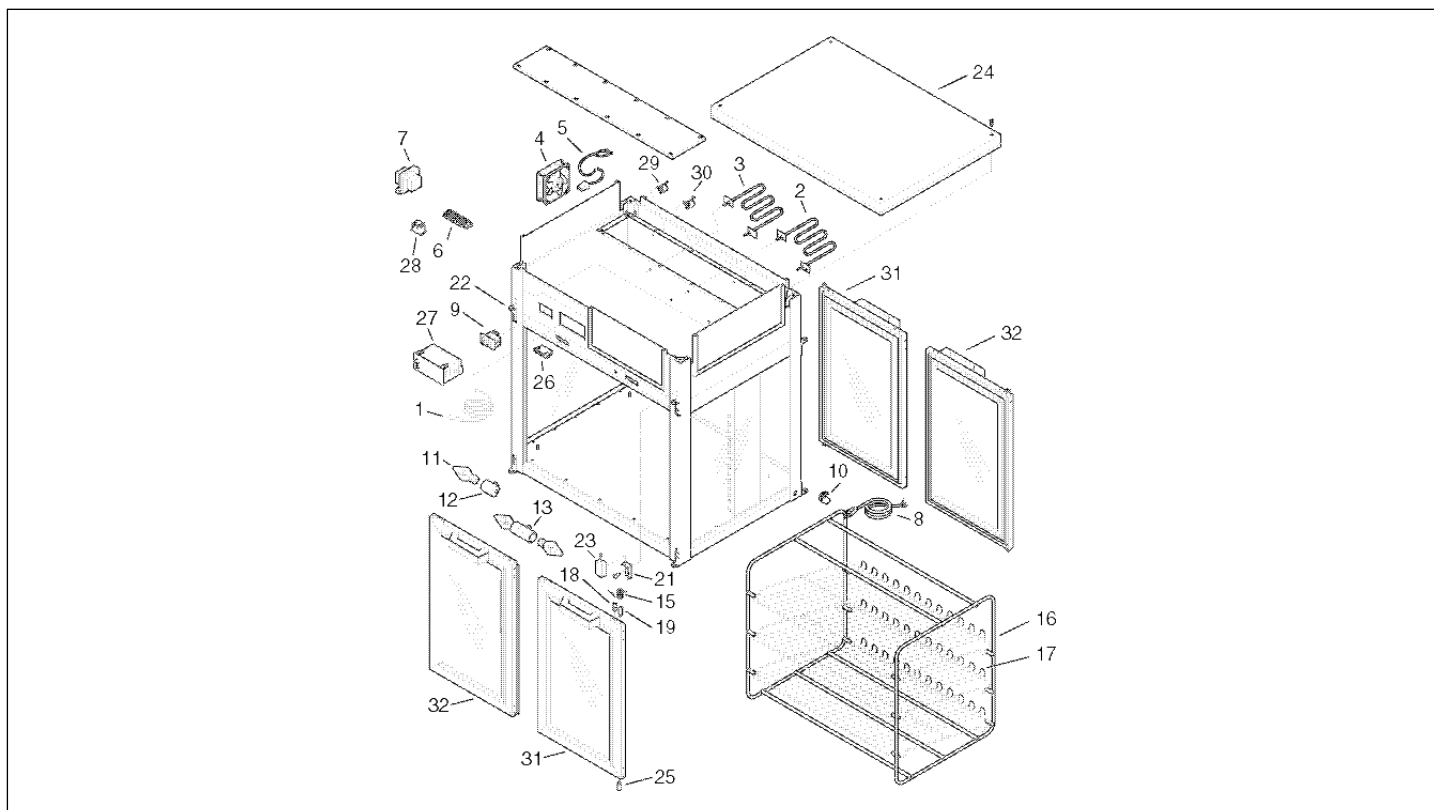
event of breakage.

1. To replace a bulb, disconnect the power supply from the unit and wait until the unit has cooled.
2. Bulbs have a threaded base. Unscrew the light bulb from the unit and replace it with a new specially coated incandescent bulb.

NOTE: Hatco shatter-resistant light bulbs meet N.S.F. standards for food holding and display areas. For 120 volt applications, use Hatco part #02.30.043.00

WARNING

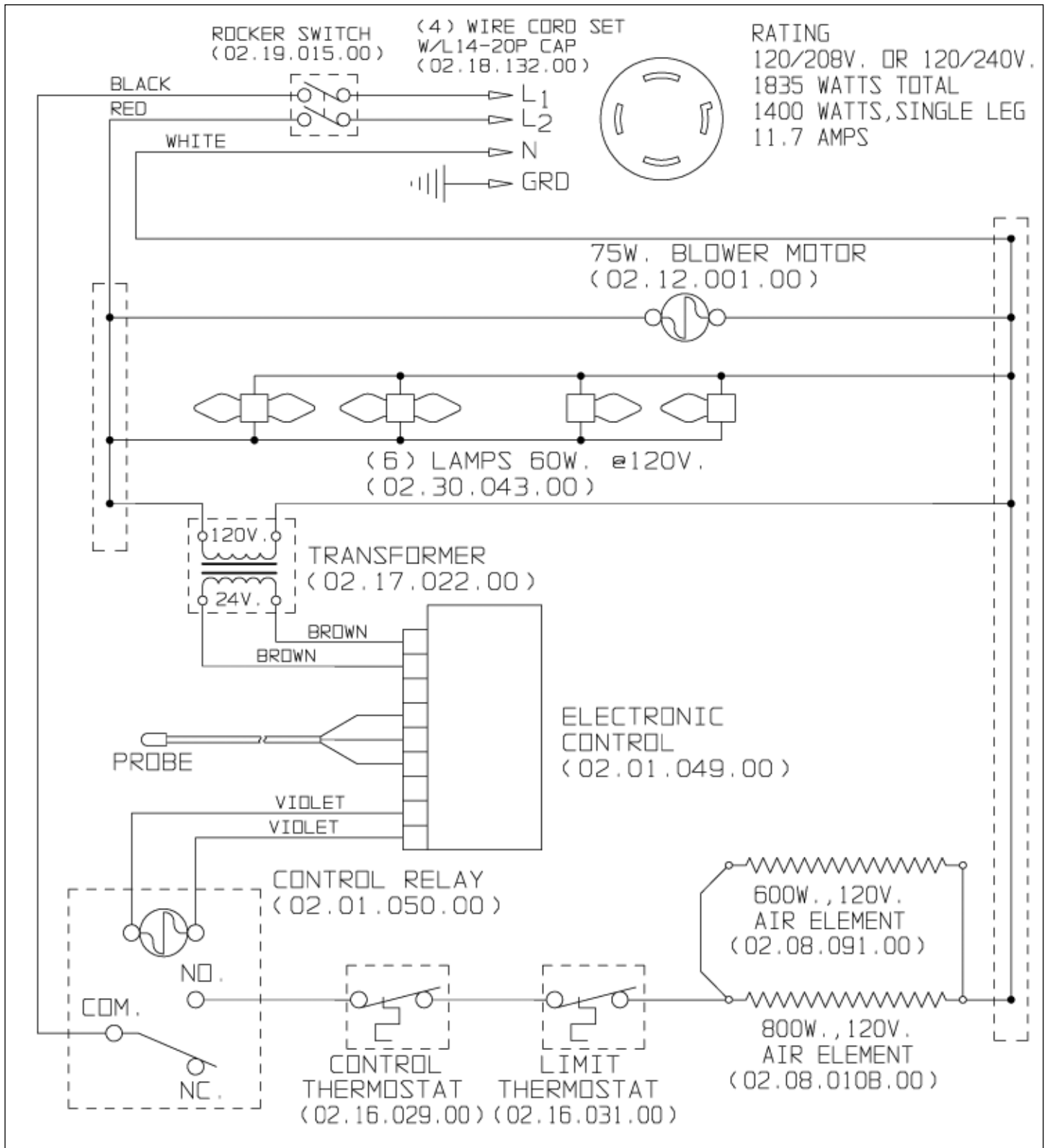
Only bulbs which meet or exceed N.S.F. standards, specifically designed for food holding areas, must be used. Breakage of bulbs not specially coated could result in personal injury and/or food contamination.



ITEM	DESCRIPTION	PART NO.	QTY.	ITEM	DESCRIPTION	PART NO.	QTY.
1	Thermostat, Probe	02.01.056.00	1	18	Stop, Hinge Spring	04.17.495.00	4
2	Heating Element, 800 Watt	R02.08.010A.00	1	19	Screw, Hinge	04.17.496.00	4
3	Heating Element, 600 Watt	R02.08.091.00	1	20	Hinge Bracket, Left Hand (not shown)	04.17.501.00	2
4	Blower Motor	02.12.001.00	1	21	Hinge Bracket, Right Hand	04.17.502.00	2
5	Connector, Blower Motor	02.12.001A.00	1	22	Door Hinge	04.17.503.00	8
6	Terminal Block	02.15.012.00	1	23	Cover, Hinge Spring	04.17.504.00	4
7	Transformer, 120-24V	02.17.022.00	1	24	Top Cover, Painted	04.17.507.00	1
8	Power Cord with Plug	02.18.132.00	1	25	Screw, Hinge	05.04.146.00	4
9	On/Off Switch	02.19.015.00	1	26	Door Magnet	05.30.005.00	4
10	Cord Grip	02.20.233.00	1	27	Electronic Temp Controller w/Probe	02.01.049.00	1
11	Light Bulb, 60 Watt	02.30.043.00	6	28	Relay, 30A, 24DC	R02.01.050.00	1
12	Single Light Socket	02.30.060.00	2	29	Thermostat, Limit Disk, 173° F	R02.16.029.00	1
13	Dual Light Socket	02.30.061.00	2	30	Thermostat, Limit Disk, 255° F	R02.16.031.00	1
14	Self-Closing Spring, Left Hand (not shown)	04.17.492.00	2	31	Door, Right Hand (Complete)	AS.257.00	2
15	Self-Closing Spring, Right Hand	04.17.493.00	2	32	Door, Left Hand (Complete)	AS.256.00	2
16	Shelf Rack	04.17.494.00	1	33	Door Handle Only	R05.30.012.00	4
17	Removable Shelf	04.17.494A.00	3				

WIRING DIAGRAM

Model AFST-2X



HATCO CORPORATION

P.O. Box 340500, Milwaukee, WI 53234-0500 U.S.A.
 (800) 558-0607 (414) 671-6350
 Parts & Service Fax (800) 690-2966 Int'l. Fax (414) 671-3976
 Web Site: www.hatcocorp.com